



## SL 20 AC-servo-Handling

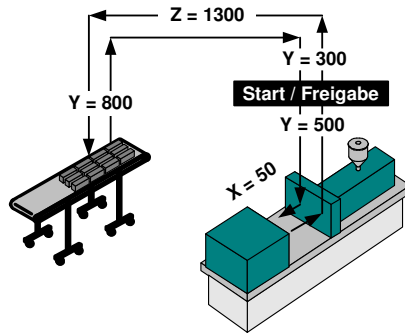
---

### **Servomotor-based handler for small injection moulding machines**

- Flexible high speed servo part handler
- Individual positioning and programming
- All the axes can be positioned at the same time
- Modular control technology with upgrade levels
- For injection moulding machines of up to 2500 kN

| Axis | Designation        | Stroke (mm)                            | V max. (m/s) |
|------|--------------------|--|--------------|
| X    | Removal stroke     | 320                                    | 0.9          |
| Y    | Vertical stroke    | 1000                                   | 2.1          |
| Z    | Transversal stroke | 1300<br>(1000) (1900)<br>(1600) (2200) | 2.4          |

#### Measured cycle



**Time of action:**  
1.2 s

**Total cycle-time:**  
5.8 s

**Dry running period with:**  
3 kg load

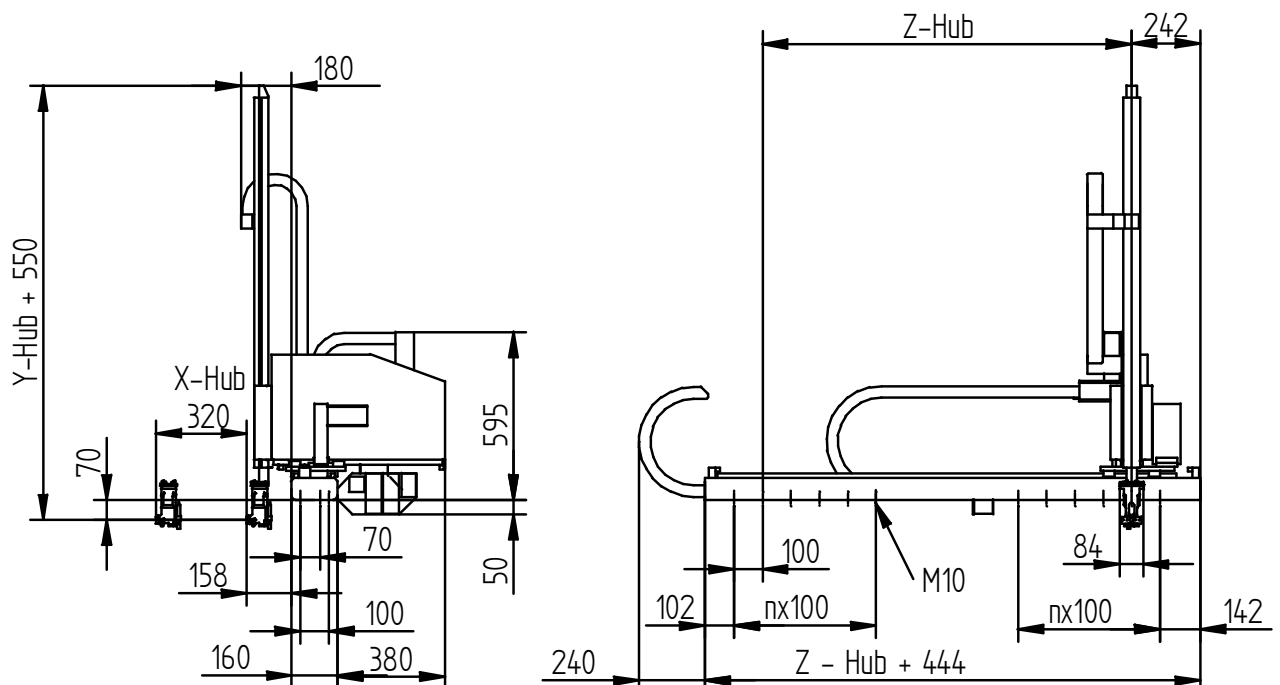
#### Technical standard specifications

- X-, Y-, Z-axes with AC servo motors
- Repeating accuracy:  $\pm 0,1$ mm
- Part and gripper weight together: up to 3 kg
- Mains voltage: 400-480 V (50/60 Hz)
- Power rating: 1000 VA
- Compressed air supply: 6 bar, consumption approx. 2 NI/cycle (without vacuum)
- One compressed air circuit and one vacuum circuit
- Rotation module C0 (0/90°)
- Freely programmable control EasyControl including EasyTeach
- All the standard Euromap 67 signals

#### Options

- Additional compressed air and vacuum circuits
- Pneumatic A and B rotation modules
- PC programming software (offline) EasySoft
- SystemControl: Upgrade Kit for complex system engineering applications
- Disk drive unit for safeguarding data
- Linkage of the hardware by means of RS485
- CAN islands for controlling the peripheral devices
- Euromap 12
- Further options upon request

All indications and images are without guarantee and can change at any time.



#### Headquarter

GHS Automation AG  
Steinhaus, CH-3150 Schwarzenburg  
Phone +41 (0)31 734 31 11  
Telefax +41 (0)31 734 31 00  
E-Mail: info@ghsautomation.com